

## MUD PUMP SPECIFICATIONS

# RIG SIX

### PUMP ONE

<b>MAKE &amp; MODEL</b>	JB1 F1000, Triplex
<b>MUD PUMP POWER</b>	Detroit Diesel Series 2000, Rated @ 800kW (1,070hp), Continuous Power @ 2,000rpm
<b>STROKE LENGTH</b>	254 mm (10")
<b>MAXIMUM PUMP SPEED (strokes/min)</b>	150
<b>MINIMUM PUMP SPEED (strokes/min)</b>	25
<b>OPTIMUM LINER SIZE</b>	140 mm (5.5")

LINER SIZE		VOLUME / STROKE @ 100% EFFICIENCY		MANUFACTURER'S PRESSURE RATING (100%)		MAXIMUM ALLOWABLE WORKING PRESSURE RATING (80%)*		VOLUME @ 140 strokes/min	
mm	inches	m <sup>3</sup> /min	gal/stroke	kPa	psi	kPa	psi	m <sup>3</sup> /min	gal/min
114	4.5	0.00784	2.07	36,812	5,339	29,450	4,271	1.09	289
127	5	0.00965	2.55	29,855	4,330	23,884	3,464	1.35	357
140	5.5	0.01170	3.09	24,650	3,575	19,720	2,860	1.64	432
152	6	0.01389	3.67	20,753	3,010	16,602	2,408	1.94	513
165	6.5	0.01631	4.31	17,637	2,558	14,110	2,056	2.29	604

### PUMP TWO

<b>MAKE &amp; MODEL</b>	JB1 F1000, Triplex
<b>MUD PUMP POWER</b>	Detroit Diesel Series 2000, Rated @ 800kW (1,070hp), Continuous Power @ 2,000rpm
<b>STROKE LENGTH</b>	254 mm (10")
<b>MAXIMUM PUMP SPEED (strokes/min)</b>	150
<b>MINIMUM PUMP SPEED (strokes/min)</b>	25
<b>OPTIMUM LINER SIZE</b>	140 mm (5.5")

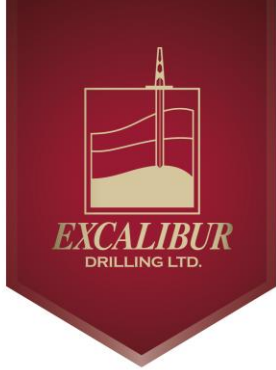
LINER SIZE		VOLUME / STROKE @ 100% EFFICIENCY		MANUFACTURER'S PRESSURE RATING (100%)		MAXIMUM ALLOWABLE WORKING PRESSURE RATING (80%)*		VOLUME @ 140 strokes/min	
mm	inches	m <sup>3</sup> /min	gal/stroke	kPa	psi	kPa	psi	m <sup>3</sup> /min	gal/min
114	4.5	0.00784	2.07	36,812	5,339	29,450	4,271	1.09	289
127	5	0.00965	2.55	29,855	4,330	23,884	3,464	1.35	357
140	5.5	0.01170	3.09	24,650	3,575	19,720	2,860	1.64	432
152	6	0.01389	3.67	20,753	3,010	16,602	2,408	1.94	513
165	6.5	0.01631	4.31	17,637	2,558	14,110	2,056	2.29	604

\*Excalibur Drilling Ltd.'s policy is to have a maximum allowable working pressure at 80% of the manufacturer's pressure rating.

**HEAD OFFICE & OPERATIONS**  
P.O. BOX 2189, 490 Canal St., Brooks, AB T1R 1C8  
P 403-793-2092 F 403-793-2094 TF 1-888-869-5324

**CONTRACTS OFFICE**  
700, 435 - 4th Ave SW, Calgary AB T2P 3A8  
P 403-269-2041 F 403-269-2652

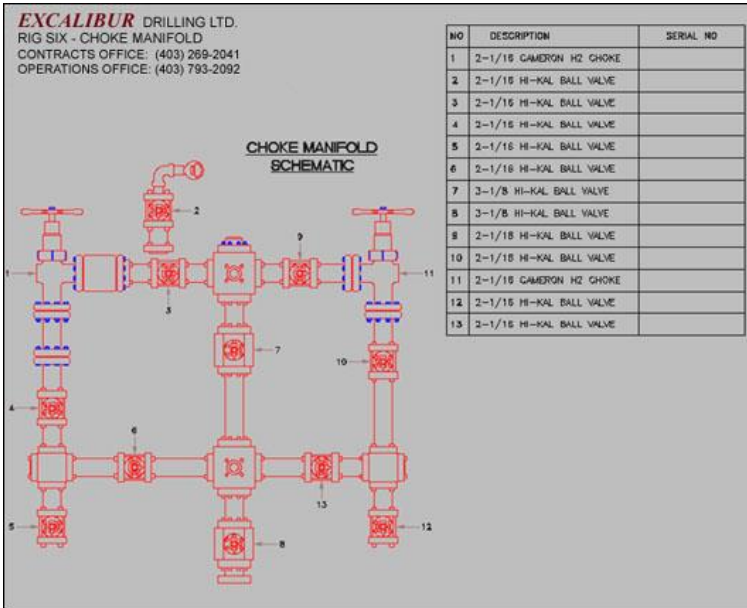
[www.excaliburdrilling.com](http://www.excaliburdrilling.com)



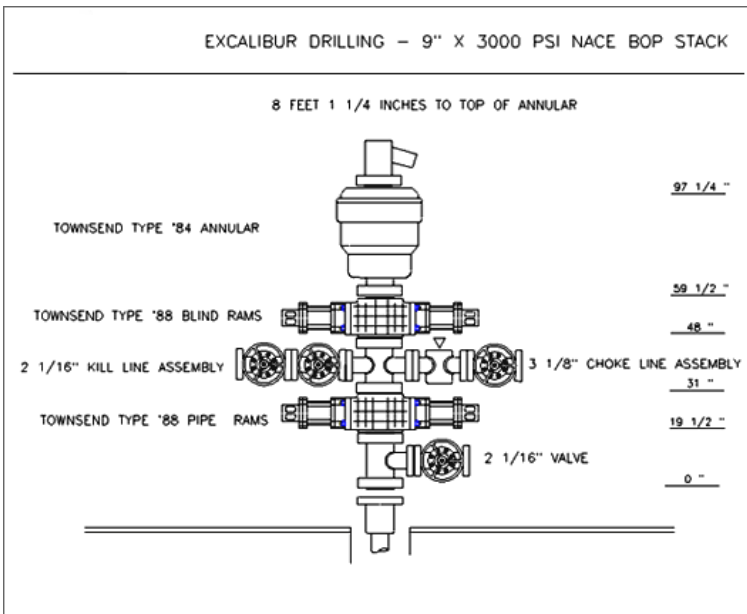
# WELL CONTROL SCHEMATICS

## RIG SIX

### CHOKE MANIFOLD SCHEMATIC



### BOP STACK SCHEMATIC



HEAD OFFICE & OPERATIONS  
 P.O. BOX 2189, 490 Canal St., Brooks, AB T1R 1C8  
 P 403-793-2092 F 403-793-2094 TF 1-888-869-5324

CONTRACTS OFFICE  
 700, 435 - 4th Ave SW, Calgary AB T2P 3A8  
 P 403-269-2041 F 403-269-2652

[www.excaliburdrilling.com](http://www.excaliburdrilling.com)